

PM Utility for client/server use

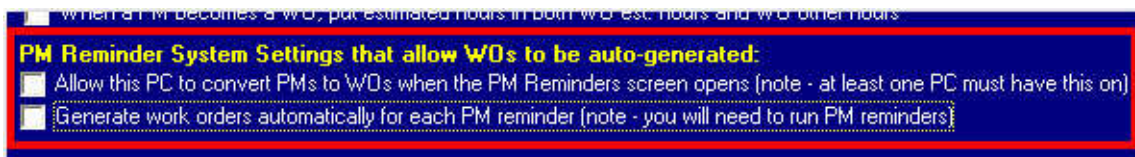
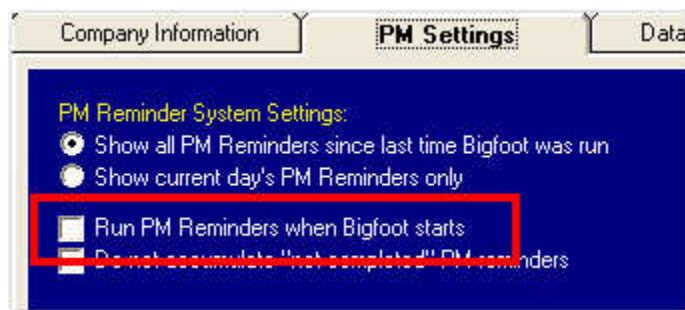
by Smartware Group

support@bigfootcmms.com



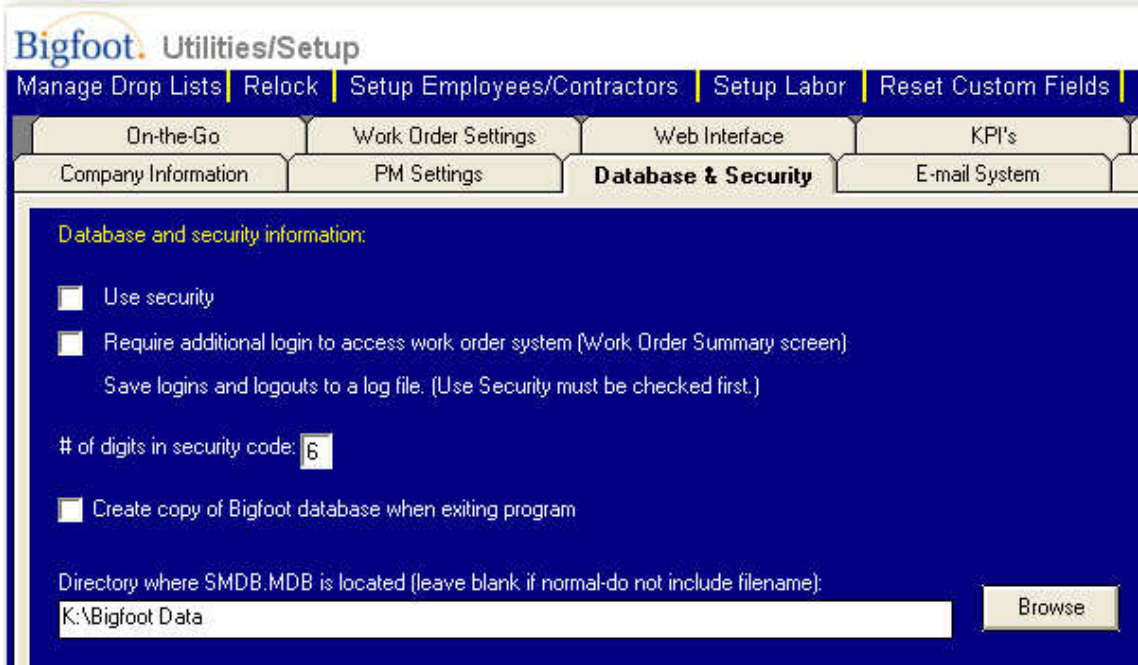
The PM utility is supplied as a zipped package, **Bigfoot_PM_Utility.zip**. You may un-zip it to any directory (folder) you wish. Before you work with the PM Utility, you need to **blank** some settings in the utilities/setup section of the Bigfoot program:

On the PM Settings tab –

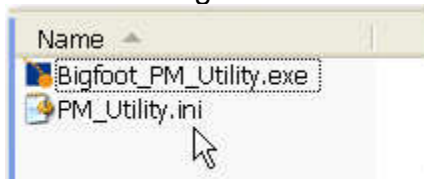


You also need to know the **database path** that's listed on the **Database/Security tab** – please write it down accurately or copy it:

(screen shot on next page)

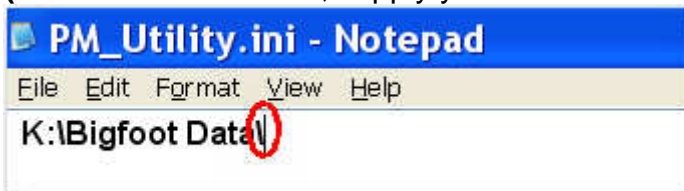


Your next order of business is editing the ini file.



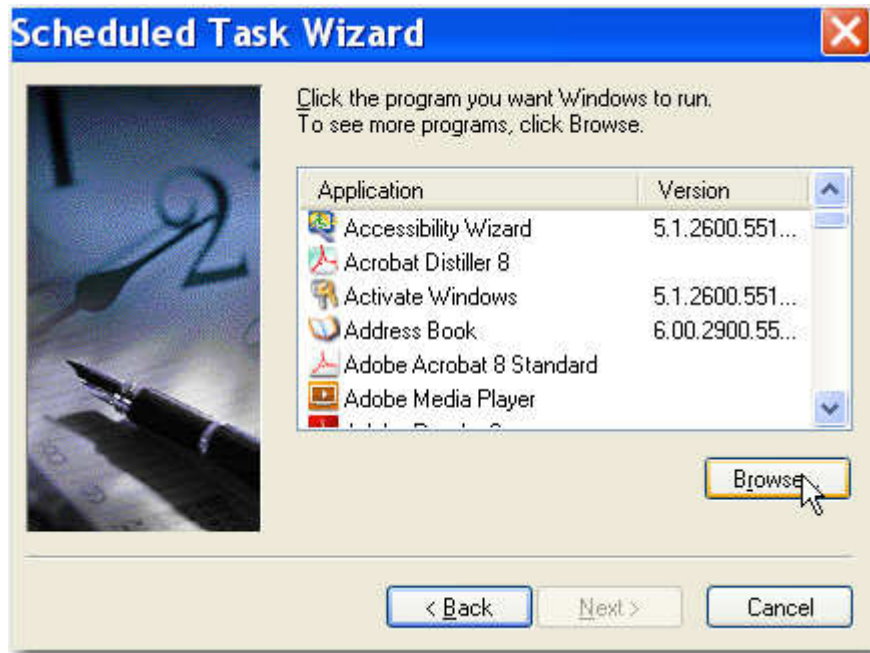
Edit the ini file so that it matches the “directory where SMDB.MDB is located.”

Be sure to include a final backslash (\) in the path.
(Note – for SQL users, supply your ODBC information.)

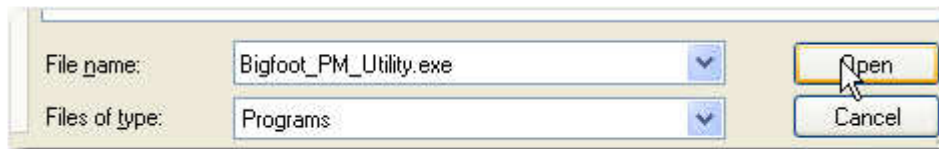
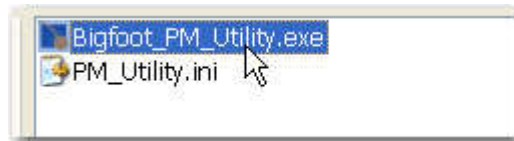


Save the file; there is no more editing to be done.

Now go to your control panel and highlight scheduled tasks; now select “Add Scheduled Task.” With the **Scheduled Task Wizard**, you will be able to browse your way to the PM utility.

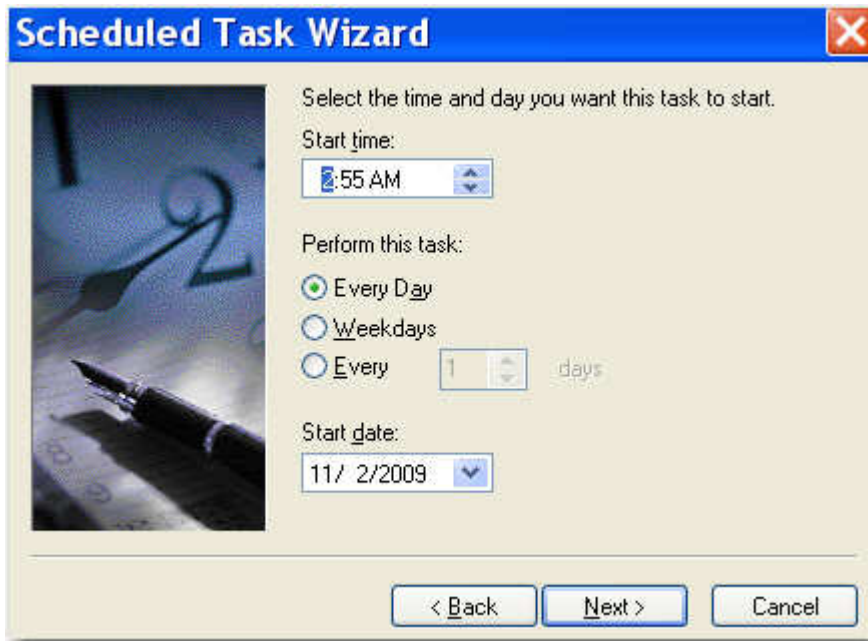


When you are in the proper directory, highlight the executable file.



By clicking “Open,” you are merely choosing the file - nothing more.

The Scheduled Task Wizard will bring you to a screen (shown on next page) where you may specify the time of execution, the frequency, and the starting date.

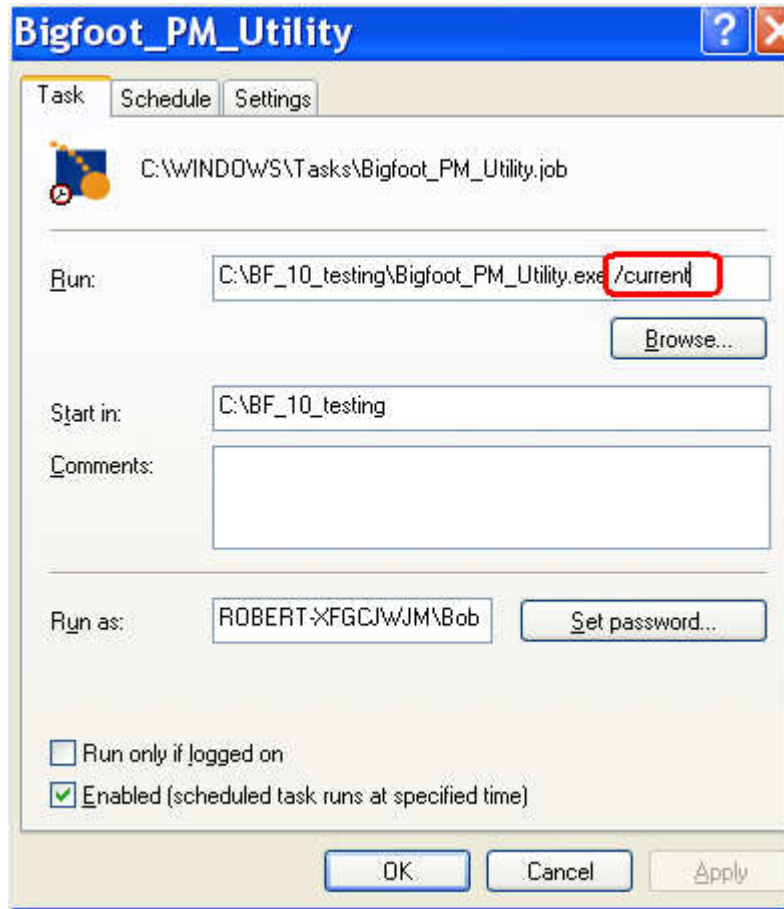


You will be prompted for a username and password:

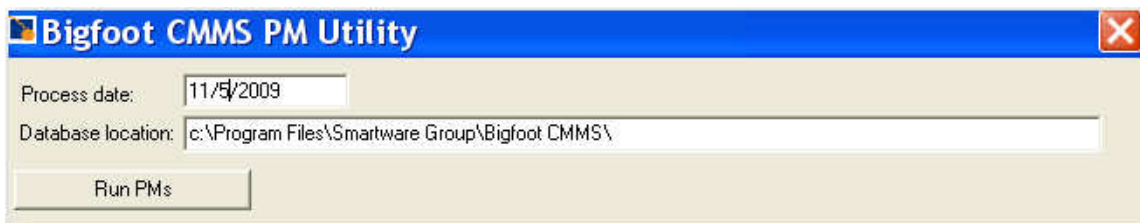


When you click "Next," you will be told that you have successfully scheduled the task.

Not quite... go ahead and click "Finish," but there is one more step we need to do. Use the task scheduler to select the "Bigfoot_PM_UTILITY"; on the task tab, we need to enter a parameter: "/current".

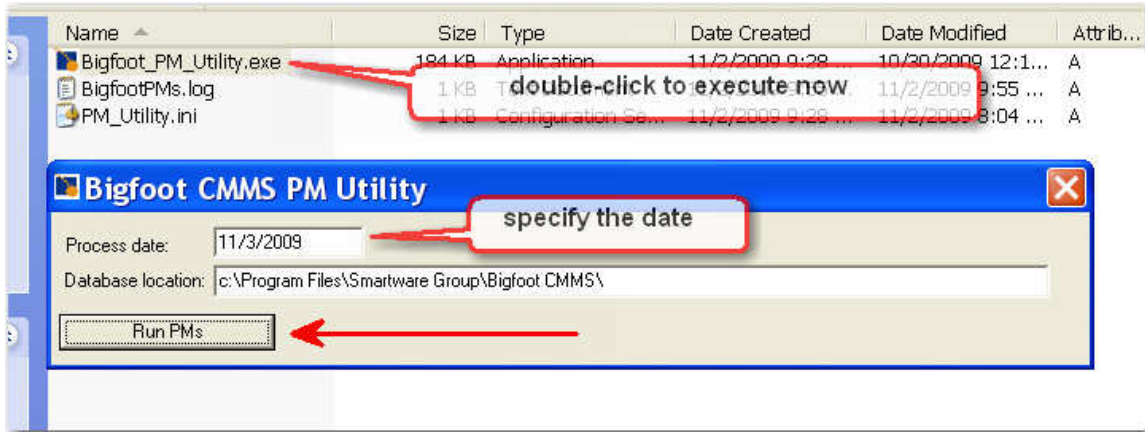


The **/current** uses the current date and does not require any user intervention. Without that parameter, the routine will patiently wait for somebody to “run” it, and this will be on your screen:

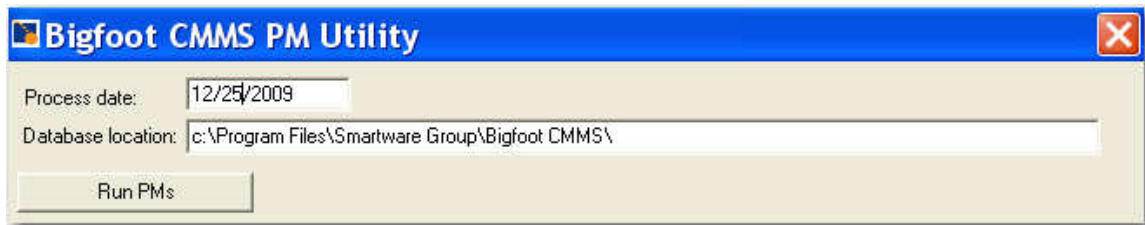


The PM Utility may also be run manually if, for some reason, you have skipped a day. The details are on the next page, but they are NOT NEEDED for the automated routine we have been discussing.

You may use your Windows Explorer or the “run” utility on a day-by-day basis. Just make sure that you pay attention to the **process date**. It will always come up as today’s date.



One final word for those of you who think you just found a way to “beat the system”...



A future date will be overwritten by today’s date, and you will receive a reminder.

